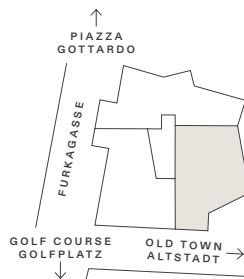
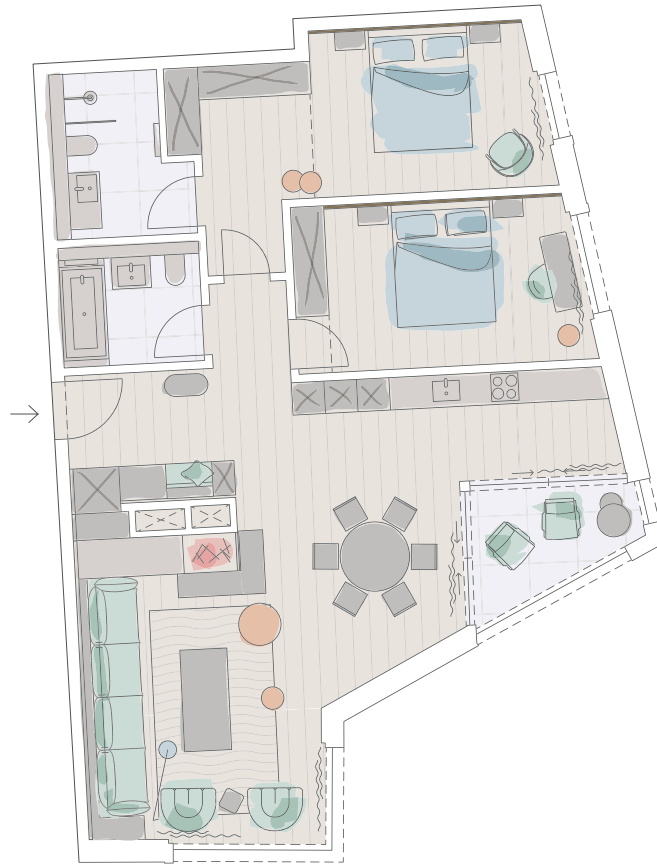


Residence 3

2.OG.1



TOTAL: 110.5 M²
2ND FLOOR / 2. OBERGESCHOSS
ROOMS / ZIMMER: 3.5
BEDROOMS / SCHLAFZIMMER: 2
LOGGIA: 5.4 M²

Total describes the apartment area plus 25% of any first floor terrace, 50% of any loggia and 25% of the cellar.
«Total» beschreibt die Wohnungsfläche plus 25% der Terrasse im 1. Obergeschoss, 50% der Loggia und 25% des Kellers.